



Manual



Scan the QR code for
more information and
tips & tricks!





Dear customer,

Congratulations on the purchase of this device. Please read this manual carefully and observe the following tips to avoid damage. Any malfunction caused by ignoring the items and warnings mentioned in the manual is not covered by our warranty and any liability. Scan the QR code to go to the website.

CONTENTS

Technical data Declaration of
conformity Safety instructions Product
preparation
Control Panel Features
Gardening tips



TECHNICAL DATA

Article MG208

Power supply 220-240 V ~ 50/60 Hz

DECLARATION OF CONFORMITY



This product complies with the following

European

Guidelines:

2014/30/EU (EMC)

2014/35/EU (LVD)

2011/65/EU (RoHS)



SAFETY INSTRUCTIONS

Special instructions

To reduce the risk of electric shock, this VeggieTable has a specific plug. Do not change the plug in any way.

DANGER - to reduce the risk of electric shock

reduce: - Always unplug the VeggieTable before cleaning or replacing the LED unit.

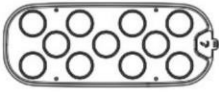
WARNING - to reduce the risk of burns, fire, electric shock or **personal injury:** -

Unplug the VeggieTable from the mains before fitting or removing any parts. - Close supervision is necessary when VeggieTable is used by or near children, invalids or disabled people. - Never use VeggieTable if the cord or plug is damaged, if it is not working properly, if it has been dropped and damaged or if it has fallen into water. If any of these circumstances occur/exist, contact your country's local distributor for instructions. - Never drop or insert objects into electrical openings. - To disconnect, unplug the power cord. - Do not place or immerse the cord, plug or light unit in water or any other liquid to clean it. - Do not allow water to come into contact with hot LED grow lights. - Do not use outdoors. It is i n t e n d e d for use in domestic households and similar working and living environments. - Do not expose it to direct sunlight or place it near heat sources such as radiators, heat vents, stoves or other heat-generating devices. - Electrical wiring must comply with local regulations.



PRODUCT PREPARATION

Included in package



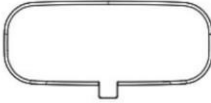
1 x
Growing
deck



11 x
Plant
baskets



11 x
Smart
pod



1 x Light
panel



11 x
Domes



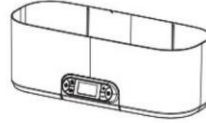
11 x
Spacer
covers



1 x
Light
post



1 x
Water
pump

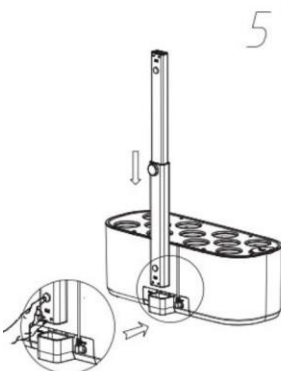
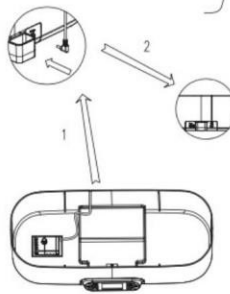
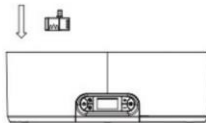


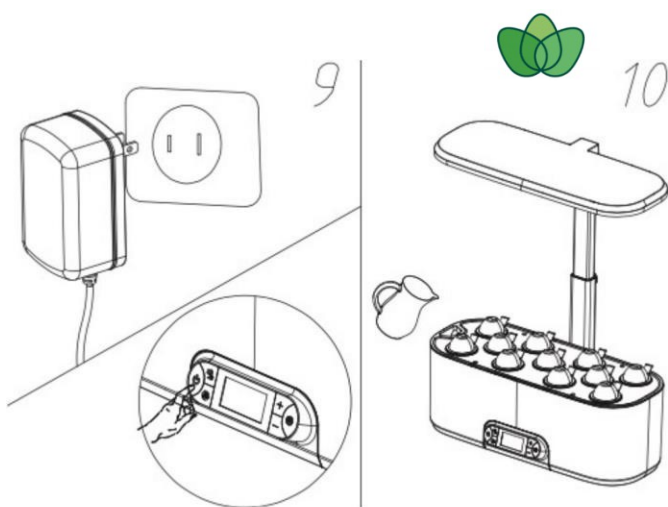
1 x
Tan
k



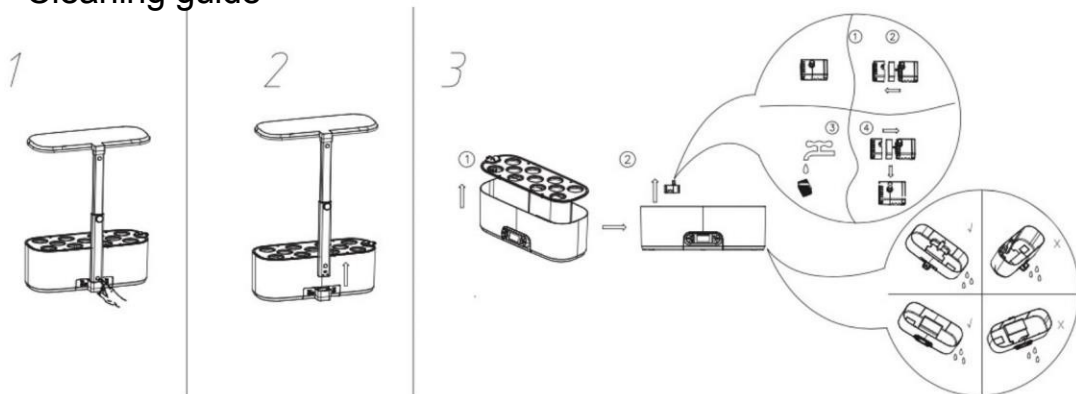
1 x
Adapte
r

Installation steps





Cleaning guide



Raising or lowering the light panel

To raise or lower the light panel, first loosen the screw and then adjust the upper part of the light post to raise or lower your light panel. Once you reach the desired height, tighten the screw to secure the light panel.

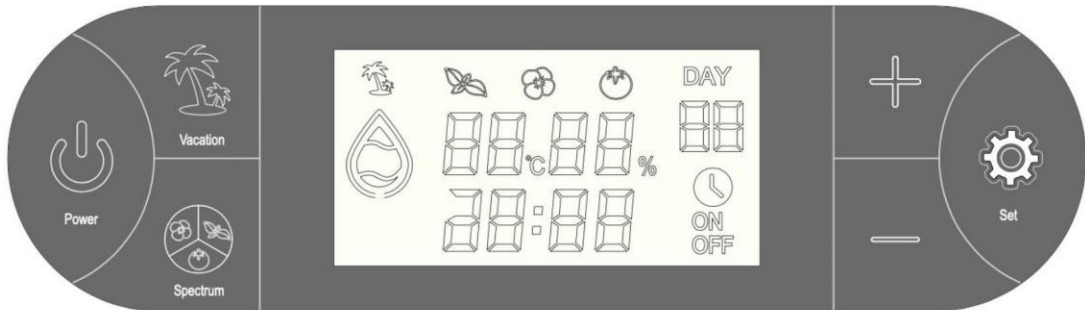
Note: When growing plants, the light panel should be as low as possible.

Turn the screw to adjust the height of the light post.





CONTROL PANEL SETTING



POWER

Press this to temporarily switch the lights on/off. This does not affect the timing of your light cycle and occasional use is not harmful to your plants. Once pressed, the lights will remain on/off until the next time they are set to go on/off. See the 'An important note about lights' section below.

Press and hold **for 5 SEC** to reset the paired devices.

This disconnects all devices paired with the VeggieTable and puts them into pairing mode. See "Pairing a device with the VeggieTable".

An important note on lighting:

The device has an intelligent lighting system. Press Power to temporarily switch the lights on or off. Your lights will automatically return to their programmed settings at the start of the next on/off cycle.

For Herbs/leaf plants we recommend at least 16 hours on and 8 hours off. For flowers we recommend at least 12 hours on and 12 hours off. For fruit and vegetables we recommend 16 hours on and 8 hours off.

When you switch on holiday mode, the light duration is reduced by half, so the light-off time is changed automatically.



Pairing a device with the VeggieTable:

Make sure the VeggieTable is connected and that your device is Bluetooth, Wi-Fi and location enabled (no data is collected, this is only required for the initial pairing).

Press and hold "Power" for 5 seconds until the green light between "Vacation" and "Spectrum" flashes on the control panel. The green light will turn off automatically after 20 seconds and the pairing mode will last for 3 minutes.

When a device is successfully paired, the light stops flashing. Download the Smart Life app and make sure the VeggieTable is connected.



When in setting mode (words flash on the screen), press to adjust the time and numbers.

When leaving the setting mode, you can directly press "+" or "-" to dim the light. Press the "+" button directly, the light becomes stronger. Press the "-" button directly, the light becomes weaker. The lamp has 5 dimming modes.



SET

Press "SET" to set your clock to the current time (this can also be done in the app).

- A) Press the SET button once, set the local hour time and press "+" or "-" to adjust the time.
- B) Press the SET button twice, set the local minute time and press "+" or "-" to adjust the time.
- C) Press the SET button for the third time. The word "ON" will flash on the screen. Then set the automatic light to hourly time and press "+" or "-" to adjust the time.
- D) Press the SET button for the fourth time. The word "ON" will flash on the display. Then set the automatic light to minute time and press "+" or "-" to adjust the time.



- E) Press the SET button for the fifth time. The word "OFF" will flash on the screen. Then set the automatic light to hourly and press "+" or "-" to adjust the time.
- F) Press the SET button for the sixth time. The word "OFF" will flash on the screen. Then set the automatic minute time for turning off the light and press "+" or "-" to adjust the time.
- G) Press and hold the "Set" button **for 3 SEC**, the planting day on the screen will flicker, then press "+" or "-" to adjust the day number.



Press to set the spectrum for the plants you want to grow:

SPECTRUM



For growing herbs, leafy plants For growing



flowers



For growing fruit and vegetables



VACATIO
N

For example, when you go on a trip, you can press this button. Pressing this button again cancels the holiday mode. The holiday mode can change the switch-off time, see the section "An important note on lighting".



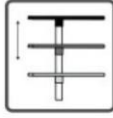
Shows the water level in the water tank. Min, 15%-25%, 25%-85%, Max.

When the water is below a low level (15%), the screen will be completely clear and you will hear a warning signal. You will also hear this signal when you connect the appliance. When the water is more than 90%, the screen will be all clear and the water drip logo will keep flashing to remind you that the water container is full for 3 minutes.

Note: top up the water 25% -85% when you first use this hydroponic grow kit and hear the warning signal.



FEATURES



Optimised spectrum

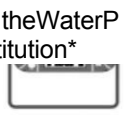
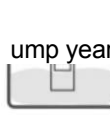
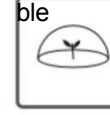
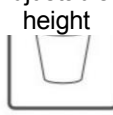
Alexa voice assistant**

HEIGHT ADJUSTABLE
Adjustable height

5-step dimmable

ALL YEAR AROUND
All

Water Pump



Download the Smart Life app by searching for "Smart Life" in your mobile App Store.



In-app function

Syncs with your device's time. The default setting is Syncs, so when a device is successfully paired, the time is automatically synchronised.



In-app function

"Quick Start" provides preset spectrum and light settings for different plant species, allowing beginners to start planting quickly.

Quick Start

*Pump setting mode:

Automatic mode - for 30 minutes per hour off when the light is on.

On mode - Run 30 minutes per hour. Off mode - Turn the pump off.

This feature is only available in the app.

****Speech assistance is limited to specific function.**

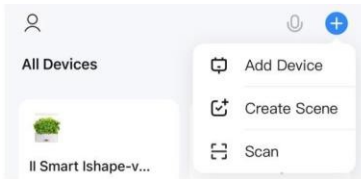
This feature is only available in the app

*****Lack of water audio alert: The water alarm can currently be enabled or disabled by the app**



ADD YOUR VEGGIETABLE TO THE APP

1. Make sure your VeggieTable is in pairing mode. Then open the Smart Life app, click "+" on the home page.



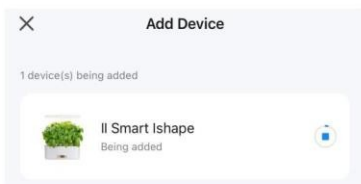
2. Click on "Add device". The app discovers all unconnected devices nearby.



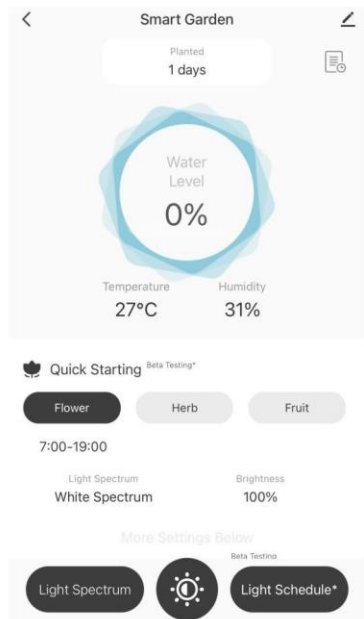
3. Click on "Add". Choose your Wi-Fi network and enter the password. The VeggieTable is only suitable for 2.4GHz networks.



4. The app connects your garden within minutes. Name your garden when your garden has been successfully added. Then click "Finish".



5. Done! Your VeggieTable is ready for use





GARDENING TIPS

What is the ideal temperature?

The ideal temperature is 65-76°F/ 16-24°C.

How and when to adjust the lighting panel?

Put the lighting panel at the lowest spot on the light post when you start to germinate the plants. When the plants start to grow and get bigger, keep the lighting panel 2.5 to 5 cm above the plants to ensure they get the right amount of light.

When may the domes be removed?

Remove the transparent domes when the plants almost touch the spacer covers.

How much water should I put in the water tank?

Plants do not need much water at first. Therefore, first fill the water to the minimum water level. When the plant starts to grow and has more leaves, you can add more water. Keep the water level between the minimum and maximum indicated point on the water indicator.

How long do the nutrients in smart soils last?

The smart soils themselves are already integrated with nutrients. The nutrients inside last at least 3 months before additional plant food is needed.

What are these spacer covers for?

Spacer lids are used to cover the holes you don't want anything to grow in or to increase the distance between plants. These covers are also for inhibiting algae growth.



How should I prune herbs like basil when they are tall?

Follow the main stem back to the previous set of leaves and cut right above the 5th set of leaves (see attached photos 1 and 2). Cut the herb back about 6 mm above a bud (the place where leaves emerge). After pruning, leave several centimetres of leaves (3 pairs recommended) on the plant.

When pruning, never take more than 1/3 of the plant. Regularly pinching or pruning back basil plants encourages full plants. Prune a basil plant every two to three weeks and cut off the flower buds as soon as you see them.

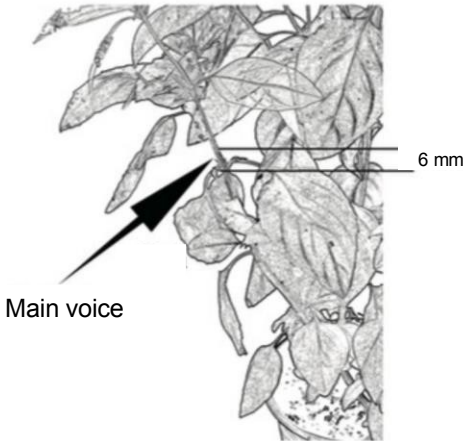


Photo
1



Photo
2